

GlobeSurfer® Wi-Fi Cradle

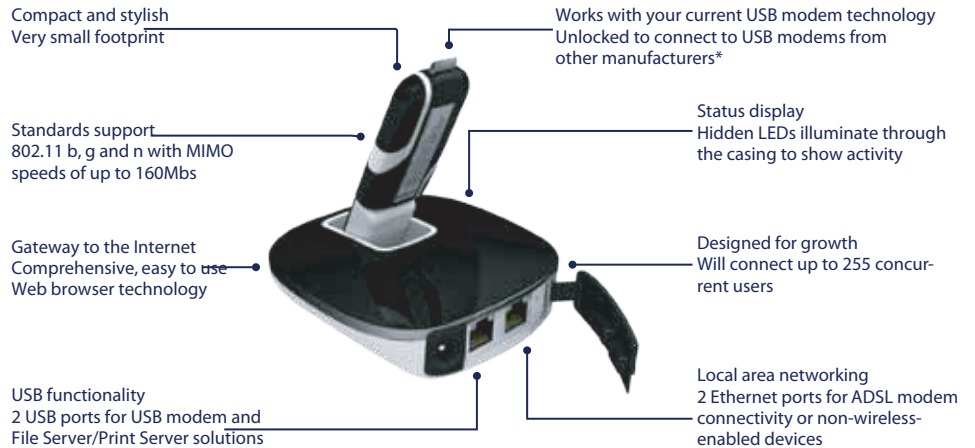
With its smooth lines and small footprint, the stylish GlobeSurfer Wi-Fi Cradle from Option is ideal for easy-to-use wireless and wired networks in the office, at home, or anywhere collaborative working is required.

As a standalone device, this wireless cradle provides you with unparalleled LAN/WAN speeds of up to 160Mbps.

For easy Internet access, simply plug your current USB modem stick into the cradle. A second USB port offers additional high-end functionality such as Print Server and File Server for excellent local networking capabilities.

Two further Ethernet ports deliver connectivity to users without wireless ability. Connect a fixed line ADSL modem/router to an Ethernet port and you have a ready-made ADSL to 3G fail over solution.

Artikelnummer: OPT90040



Specifications

IEEE 802.11b/g and n (MIMO)

WLAN Access Point

- > WEP, WPA, WPA2
- > MAC address blocking
- > Option to disable WLAN radio

USB

- > Support for External NAS HDDs or USB printers

Ethernet

- > 10/100 Mbps Auto MDIX

LAN services

- > DHCP server and proxy
- > DNS server and proxy

VPN functionality

- > VPN passthrough
- > PPTP and IPsec client and server
- > L2TP client

Firewall and gateway features

- > Advanced NAT
- > MAC address filtering
- > Demilitarized Zone (DMZ)
- > DoS and intrusion protection
- > Stateful Packet Inspection
- > Configurable security policies
- > Application Level Gateway (ALG) modules
- > Event logging
- > DHCP server and proxy
- > DNS server and proxy
- > Time

Additional specifications

- > External 220 - 240V EU & UK, 110V US power adapter
- > Dimensions: 100 x 100 x 25mm
- > Weight: 45 g plus power adapter

- > Desktop form factor
- > Operating environment - for indoor use: 0°C to +50°C; 5-95% humidity



As part of the continual product improvement process, Option reserves the right to alter the specifications of this product.

Copyright ©2008 OPTION. All rights reserved. Option, GlobeSurfer and the Option logo are trademarks of OPTION.

All third-party trademarks are the property of their respective owners.

Approvals & certifications

- > All applicable regulatory approvals, Operate Microsoft WHQL certified drivers and Infrastructure IOT